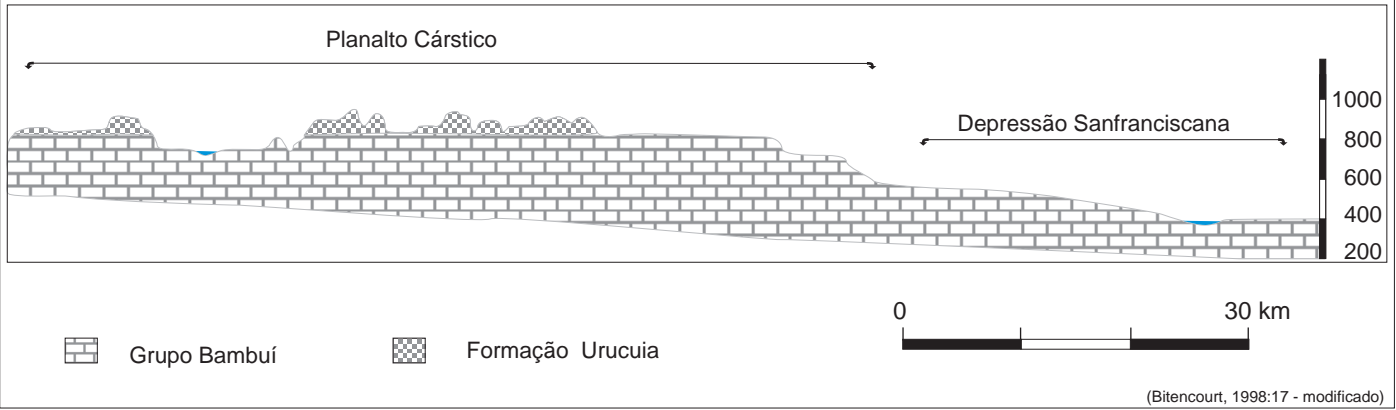
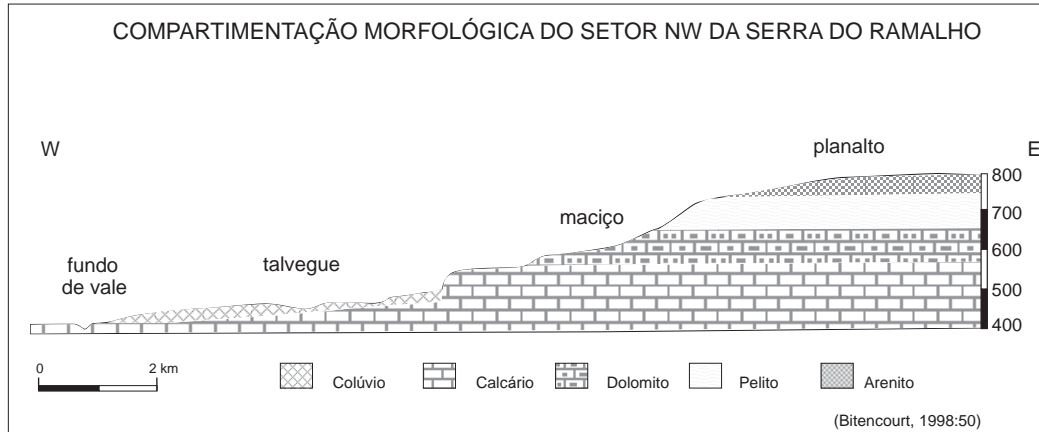


SERRA DO RAMALHO - UNIDADES MORFOLÓGICAS

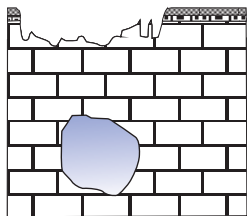


COMPARTIMENTAÇÃO MORFOLÓGICA DO SETOR NW DA SERRA DO RAMALHO

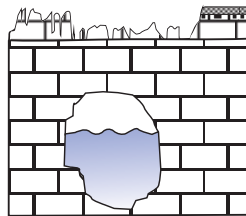


SISTEMA EVOLUTIVO ESQUEMÁTICO DA SERRA DO RAMALHO

Etapa 1

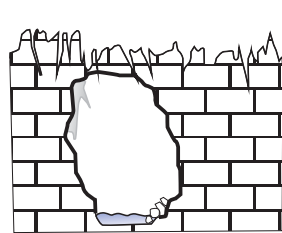


conduto afogado dinâmico

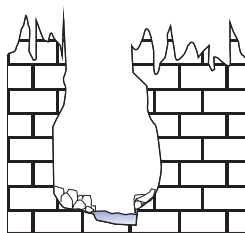


conduto evoluído vadoso

Etapa 2



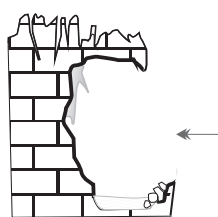
conduto vadoso



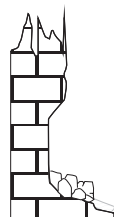
canion

- arenito
- calcário
- dolomito
- água
- espeleotemas
- alúvio
- colúvio

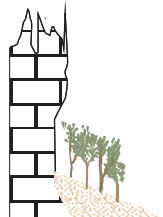
Etapas 3 e 4 (3 fossilizada)



paleo-conduto recortado por erosão superficial - abrigo 'a'



abrigo 'b'



sedimentação da encosta

Fonte: João Rodet, 2003 (inf. pess.); Moura, 1997 (adaptado); Bitencourt, 1998 (adaptado)
desenho: A. Isnardis, L. Ribeiro

Prancha 2 -

Aspectos morfológicos e evolutivos do carste da Serra do Ramalho